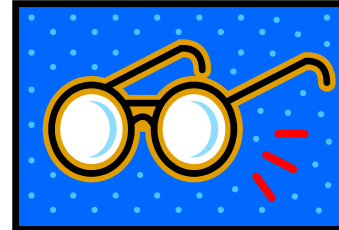


Sight Read



Track 4

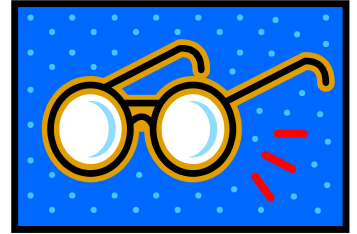
Sight Read

Waltz

CLAP/SAY: quick quick slow slow quick quick slow slow quick quick slow slow slow slow ssh!

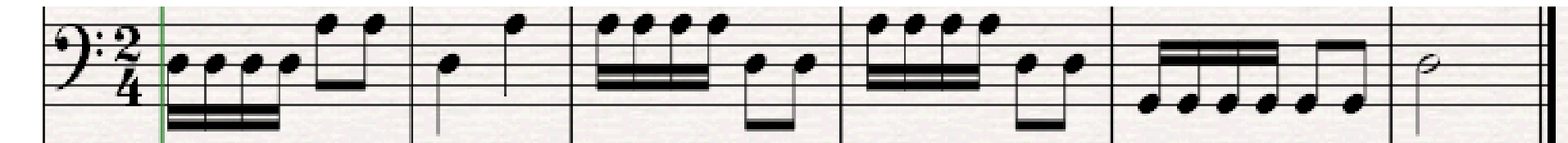
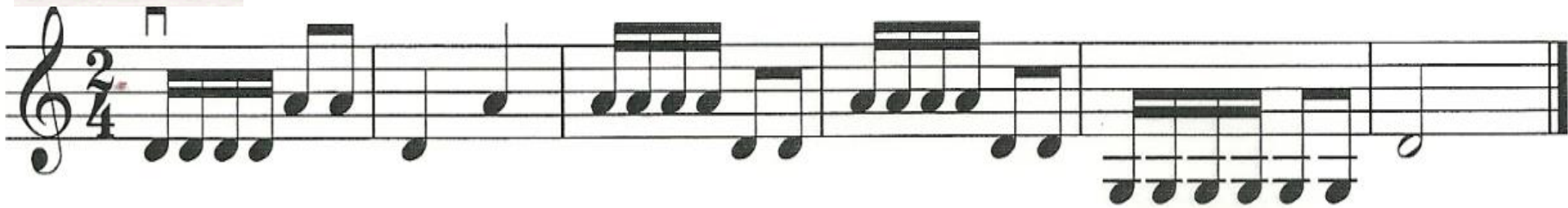
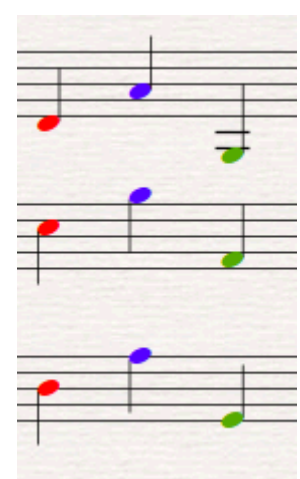
5

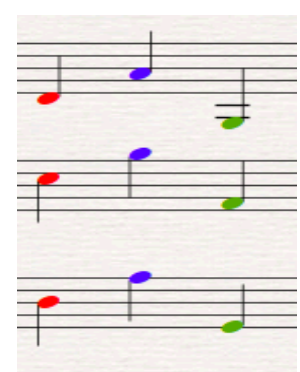
5



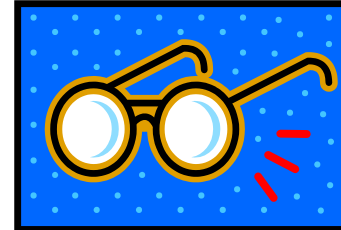
Sight Read

Track 6





Sight Read

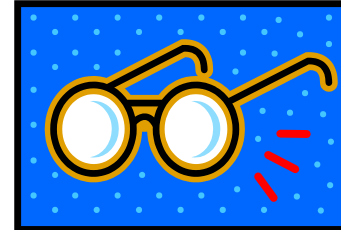


Track 7





Sight Read

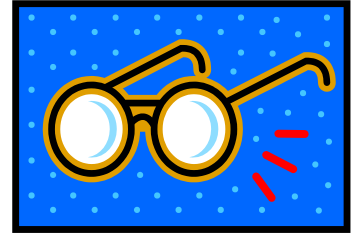


Track 9





Sight Read



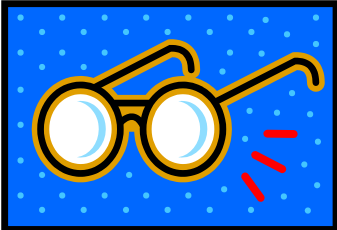
Track 10

A full musical score for Track 10, consisting of three staves. The top staff is in treble clef, the middle in alto clef, and the bottom in bass clef. The music is written in a single system and includes various rhythmic patterns such as eighth notes, sixteenth notes, and quarter notes, along with rests and bar lines.

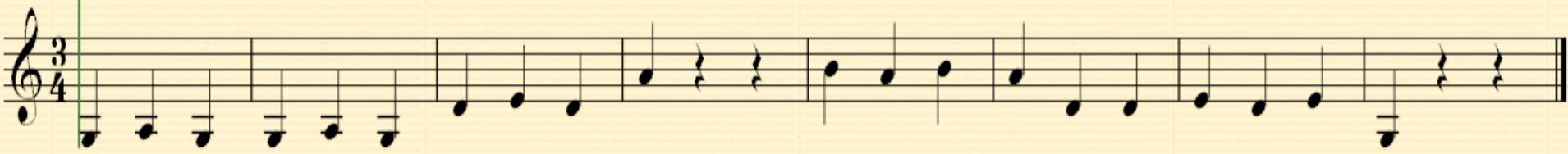


A snippet of musical notation on three staves. The notes are color-coded: green, black, red, black, purple, and black. Above the notes are fingerings: '1' in green, red, and purple. This likely represents a specific fingering technique for a particular instrument.


Sight Read



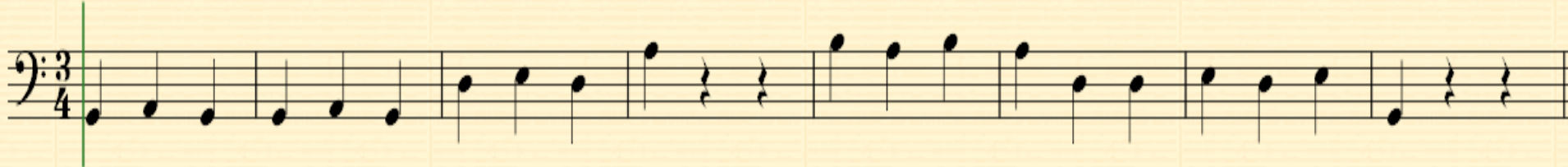
Track 11



The first staff of music, in treble clef, 3/4 time. It contains a sequence of notes: quarter notes G4, A4, B4, C5, D5, E5, F5, G5, quarter notes G5, F5, E5, D5, C5, B4, A4, G4, quarter notes G4, F4, E4, D4, C4, B3, A3, G3.



The second staff of music, in alto clef (C-clef on the third line), 3/4 time. It contains a sequence of notes: quarter notes G4, A4, B4, C5, D5, E5, F5, G5, quarter notes G5, F5, E5, D5, C5, B4, A4, G4, quarter notes G4, F4, E4, D4, C4, B3, A3, G3.

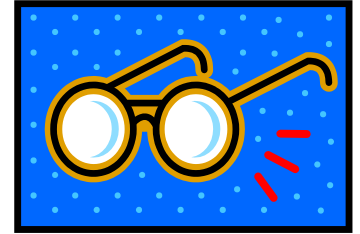


The third staff of music, in bass clef, 3/4 time. It contains a sequence of notes: quarter notes G3, A3, B3, C4, D4, E4, F4, G4, quarter notes G4, F4, E4, D4, C4, B3, A3, G3, quarter notes G3, F3, E3, D3, C3, B2, A2, G2.

Musical notation showing fingerings: 1 2, 1 2, 1 3.



Sight Read



Track 13

Musical notation for the first system, treble clef, 4/4 time signature. The notation consists of two staves. The first staff contains a sequence of notes: G4, A4, B4, C5, D5, E5, F5, G5, A5, B5, C6, D6, E6, F6, G6, A6, B6, C7. The second staff contains a sequence of notes: G4, A4, B4, C5, D5, E5, F5, G5, A5, B5, C6, D6, E6, F6, G6, A6, B6, C7. The system ends with a double bar line and a repeat sign.

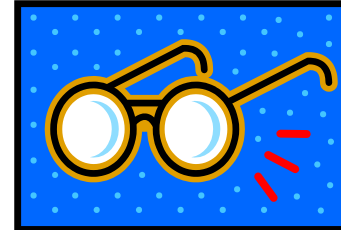
Musical notation for the second system, alto clef, 4/4 time signature. The notation consists of two staves. The first staff contains a sequence of notes: G4, A4, B4, C5, D5, E5, F5, G5, A5, B5, C6, D6, E6, F6, G6, A6, B6, C7. The second staff contains a sequence of notes: G4, A4, B4, C5, D5, E5, F5, G5, A5, B5, C6, D6, E6, F6, G6, A6, B6, C7. The system ends with a double bar line and a repeat sign.

Musical notation for the third system, bass clef, 4/4 time signature. The notation consists of two staves. The first staff contains a sequence of notes: G4, A4, B4, C5, D5, E5, F5, G5, A5, B5, C6, D6, E6, F6, G6, A6, B6, C7. The second staff contains a sequence of notes: G4, A4, B4, C5, D5, E5, F5, G5, A5, B5, C6, D6, E6, F6, G6, A6, B6, C7. The system ends with a double bar line and a repeat sign.

Three short musical staves, each with a red dot on the first line and a blue dot on the fourth line. The first staff has a red '1' above the first line and a red '2' above the second line. The second staff has a red '1' above the first line and a red '2' above the second line. The third staff has a red '1' above the first line and a red '3' above the third line, with a sharp sign (#) on the second line.



Sight Read



Track 14

Musical staff in treble clef, 2/4 time signature. The melody consists of eighth notes: G4, A4, B4, C5, B4, A4, G4, F4, E4, D4, C4. The piece ends with a double bar line.

Musical staff in alto clef, 2/4 time signature. The melody consists of eighth notes: G4, A4, B4, C5, B4, A4, G4, F4, E4, D4, C4. The piece ends with a double bar line.

Musical staff in bass clef, 2/4 time signature. The melody consists of eighth notes: G4, A4, B4, C5, B4, A4, G4, F4, E4, D4, C4. The piece ends with a double bar line.



Violin I

Violin I 1

Violin I musical staff with notes and fingerings. The notes are: G4 (green), A4 (black), B4 (black), C5 (black), D5 (red), E5 (black), F5 (black), G5 (black), A5 (purple), B5 (black), C6 (black), D6 (black), E6 (black), F6 (black), G6 (black), A6 (black), B6 (black), C7 (black). Fingerings are: 1 2 3 (green), 1 2 3 (red), 1 2 3 (purple), 1 2 3 (black).

Viola

Viola musical staff with notes and fingerings. The notes are: C4 (purple), D4 (black), E4 (black), F4 (black), G4 (green), A4 (black), B4 (black), C5 (black), D5 (red), E5 (black), F5 (black), G5 (black), A5 (purple), B5 (black), C6 (black), D6 (black), E6 (black), F6 (black), G6 (black). Fingerings are: 1 2 3 (purple), 1 2 3 (green), 1 2 3 (red), 1 2 3 (black).

10

Bass clef musical staff with notes and fingerings. The notes are: C4 (purple), D4 (black), E4 (black), F4 (black), G4 (black), A4 (green), B4 (black), C5 (black), D5 (black), E5 (red), F5 (black), G5 (black), A5 (black), B5 (purple), C6 (black), D6 (black), E6 (black), F6 (black), G6 (black). Fingerings are: 1 2 3 4 (purple), 1 3 4 (green), 1 3 4 (red), 1 3 4 (black).