

Flute

Top Cat

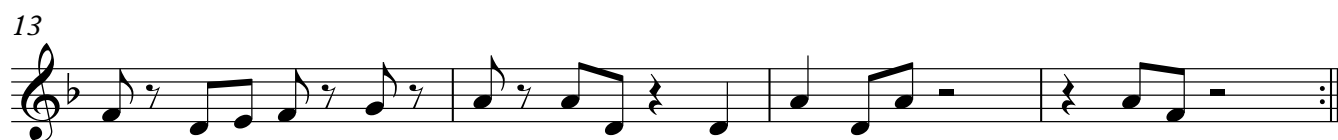
arr. tony abell



Top Cat

Clarinet in C

arr. tony abell



Top Cat

Clarinet in B \flat

arr. tony abell



Top Cat

Trombone

arr. tony abell



5



9



13



Violin 1

Top Cat

arr. tony abell

2 2 2 2 0 1 0 3 2 2 2 2 0 1 4 3

5 2 2 2 2 0 0 1 2 3 3 3 3 3 1 0 3

9 2 2 2 2 0 1 0 3 2 2 3 2 0 0 1

13 2 0 1 2 3 0 0 0 0 0 0 0 2

Viola

Top Cat

arr. tony abell

2 2 2 2 0 1 0 3 2 2 2 2 0 1 4 3

5 2 2 2 2 0 0 1 2 3 3 3 3 3 1 0 3

9 2 2 2 2 0 1 0 3 2 2 3 2 0 0 1

13 2 0 1 2 3 0 0 0 0 0 0 0 0 0 2

Violoncello

Top Cat

arr. tony abell

2 2 2 2 0 1 0 4 2 2 2 2 0 1 0 4

5 2 2 2 2 0 0 1 2 2 4 4 4 4 4 1 0 4 4

9 2 2 2 2 0 1 0 4 2 2 4 2 0 0 0 1

13 2 0 1 2 4 0 0 0 0 0 0 0 0 0 2

Double Bass

Top Cat

arr. tony abell

2 2 2 2 0 1 0 2 2 2 2 2 0 1 0 2

5 2 2 2 2 0 0 1 2 2 0 0 0 0 0 1 0 2 2

9 2 2 2 2 0 1 0 2 2 2 0 2 0 0 0 1

13 2 0 1 2 0 1 1 0 0 1 0 1 1 2